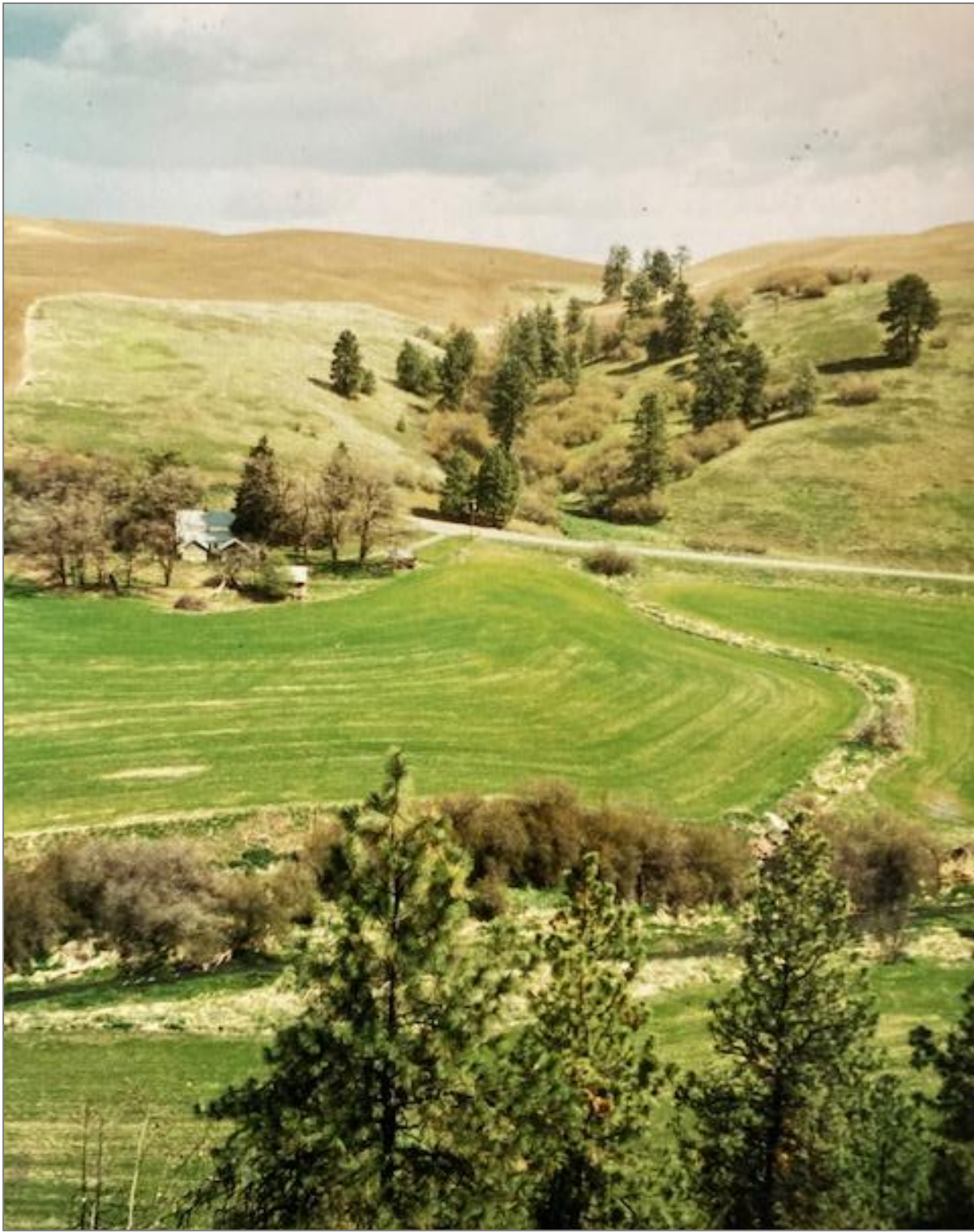


White Pine Chapter, Idaho Native Plant Society

Field Trip to Scrapper Creek

June 5, 2021

Meet at 9:30 am at 3751 Upper Union Flat Road, Colfax



Join us for a guided tour of Ronnie Hatley's property, including the proposed restoration of Scrapper Creek, near Klemgard Park. The hike will follow uphill game trails through grassy wildflower prairies, woods and shrubland and along creeks. Some parts are uphill but not too steep, trails are just narrow. So far Ronnie has found over 60 native species on his property; maybe we can find more on our field trip. Wildflowers should be abundant! We will hike in the morning and then finish with a 'distanced' circle for lunch. Bring water, your sack lunch, boots, a trekking pole, a note pad and let's go. Email Judy Ferguson (jlf.sun@yahoo.com) to RSVP or if you need directions or a ride. Please no dogs. **You must be fully vaccinated for Covid 19 to attend.**